

## SECTION O—PRODUCE

Steward: Philip Clark      Phone: 0408 554 741

Entries will be accepted 8.00—10.00am on Friday

Entry Fee 50c—First Prize—Card and \$3.00. Second Prize—Card and \$2.00.

### VEGETABLE SECTION

Vegetable and fruit exhibits to be on a tray or plate

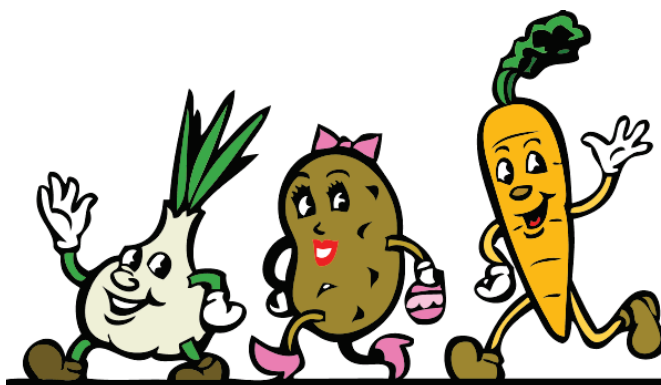
1. Three Lemons
2. Three Limes
3. Three Carrots, with tops
4. 500g Beans, any variety
5. Two Capsicums
6. Collection of Chillies
7. Two Apple Cucumbers
8. Two Green Cucumbers
9. One Queensland Blue Pumpkin
10. One Jap Pumpkin
11. One Butternut Pumpkin
12. Any Other Pumpkin
13. Six Tomatoes
14. Three Bulbs of Garlic
15. Most Unusual Vegetable
16. Collection of Herbs
17. Basket of Fruit—Suitable for hospital visit
18. Fruit Platter—fruit need not be grown by exhibitor



CHAMPION VEGETABLE EXHIBIT—\$30.00

MOST SUCCESSFUL JUVENILE EXHIBITOR—\$15.00

*Prize money has been donated by B & SP Trevisiol and Goondiwindi Regional Council.*



## FARM PRODUCE

18. One Kg or 3 Cobs any other grain
19. One Kg Wheat
20. One Kg Sorghum or Sheaf of Sorghum
21. One Bale Lucerne Hay  
*MacIntyre Brook Irrigators Trophy (To be held for one year)*
22. One Dozen Hen Eggs  
CHAMPION GRAIN EXHIBIT - \$30.00  
CHAMPION FARM PRODUCE EXHIBIT - \$30.00  
*Prize money donated by Goondiwindi Regional Council.*



## INGLEWOOD TYRE CENTRE

*Contact your local tyre specialist Tyler Wolff*

- ◆ ALL TYRE BRANDS
- ◆ COOPER AUTHORISED TYRE DEALER
- ◆ CENTURY BATTERIES
- ◆ CARLISE V. BELTS
- ◆ ON FARM SERVICE



20 Elizabeth St  
Inglewood Q 4387  
Ph. (07) 4652 1533



**DUNLOP**  
SUPER DEALER